

BENCHES

All tubes, tubular pieces and profiles that make up the benches are made of **sendzimir Z275 galvanized sheet metal**. On request, aluminium sides can be supplied.

FIXED BENCHES



Trestles: supplied already assembled, they are characterized by legs made of **40 x 40 x 1.5 mm tubular pieces** and robust omega profiles in **sheet metal**. They are designed to allow feet to be fitted for height adjustment.

Sides: made of **sheet metal**, they have a height ranging from 100 to 140 mm.

Supports: in order to support any type of support surface, reinforcements are provided, one every 50 cm of length, made with a **U-profile 30 x 30 x 30 x 1.5 mm**.

They are fixed to the base of the sides with self-drilling screws, 4.8 x 19 T.E.

Cross braces: a number suitable for the length of the bench, they are made of **ø 30 x 1.2 mm tube** and guarantee excellent solidity.

LOMBARDA SERRE S.r.l.

Via Prà delle Vigne, 191 - 21030 GRANTOLA (VA) - ITALY

Tel. (+39) 0332.57.65.56 - Fax (+39) 0332.57.67.70

Varese Companies Register N° 374656 - Tax Code / VAT No. 03727770129

e-mail: info@lombardaserre.it - website: www.lombardaserre.it

Trestles and sides are fixed by high strength \varnothing 8 mm bolts (8.8).

Standard width of the benches: 1.00 / 1.50 / 2.00 m, according to the cultivation needs

Length of the benches: multiples of 1.55 m

Standard height of the support surface: 0.70 m

SLIDING BENCHES

Trestles: Supplied already assembled, they are characterized by legs and crosspieces made of **25 x 25 x 1.5 mm tubular pieces**. The height of the support surface is adjusted by means of a special threaded bar located at the top of the stand. This bar also provides a locking function for the sliding of the bench.

Sides: made of **sheet metal**, they have a height ranging from 100 to 140 mm.

Supports: in order to support any type of support surface, reinforcements are provided, one every 50 cm of length, composed of robust omega profiles made of **sheet metal**.

They are fixed to the base of the sides by means of high resistance bolts \varnothing 8 mm (8.8) so as to form a single platform.

Cross braces: a number suitable for the length of the bench, they are made in a cross with **\varnothing 18 x 1 mm tube** and guarantee excellent solidity.

Sliding tubes: made of **\varnothing 50 x 1.5 mm tube**, with a simple touch it is possible to move the upper platform, sideways with respect to the positioning of the lower trestles.

Anti-tipping profile: made of **sheet metal**, it is essential for this type of bench. Two are installed for each bench, in correspondence with the lower trestles. They are fixed to the upper platform by self-drilling screws, 4.8 x 19 T.E..

Standard width of the benches: **1.50 / 1.80 / 2.00 m**, according to the cultivation needs

Length of the benches: multiples of **1.55 m**

Standard height of the support surface: **0.70 m**

MOBILE BENCHES



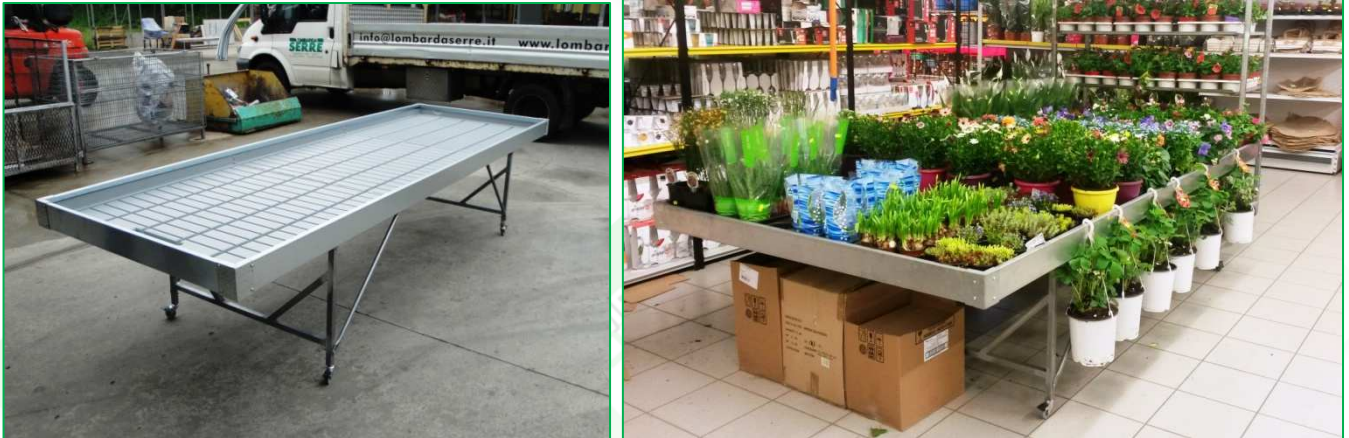
Made with the same system as the fixed benches, they are equipped with 4 robust wheels, 2 fixed and 2 rotating, so as to allow easy movement.

Width of the benches: 1.00 / 1.50 / 2.00 m

Length of the benches: 3.00 / 4.00 m

Standard height of the support surface: 0.70 m

"STACKABLE" BENCHES (fixed or mobile)



The structure is similar to that of the sliding benches but with the characteristic of having **folding legs** so that they can be folded when the bench is placed in the warehouse.

The mobile type is equipped with 4 robust wheels, 2 fixed and 2 rotating, so as to allow easy movement.

Width of the benches: 1.00 / 1.50 m

Length of the benches: 3.00 m

Standard height of the support surface: 0.70 m

BENCHES FOR POTTING (fixed or mobile)

Supplied already assembled, they are characterized by legs and crosspieces made of **40 x 40 x 1.5 mm tubular pieces**. Special **metal sheets** comprise the containment sides of the soil and the work surface.

The mobile type is equipped with 4 robust wheels, 2 fixed and 2 rotating, so as to allow easy movement.

Width of the benches: **1.50 / 2.00 m**

Depth of the benches: **0.80 m**

Standard height of the support surface: **0.70 m**

The fixed benches are multi-purpose and are used for both agricultural and floricultural applications, the mobile and "stackable" benches are normally used inside garden centres for exhibition use, the potting benches are used in the plant preparation areas while the sliding models are mainly used for the production areas since they allow the covered area of the greenhouse where they are installed to be maximized.

Support surfaces:



option 1: white polystyrene plate

high performance sintered expanded polystyrene with RF closed cell and guaranteed quality for thermal insulation, with a bending strength of 350 kPa, 50 mm thickness, self-extinguishing class 1.



option 2: flow and reflux tank

light grey shock-resistant polystyrene floor plates, sealed with special glue to contain water to irrigate crops. Guaranteed for 5 years, they support up to 70 kg/sqm of weight and withstand temperatures up to 60°C. A \varnothing 3/4" drain cock is provided for each bench.

option 3: **electrically**

welded

mesh



30 x 30 hot galvanized electro-welded mesh with 3 mm thickness.

Each basic support option can be used for any type of bench except for the potting bench where the surface is made of sheet metal!